

Electric plastic butterfly valve (referred to as: electric UPVC butterfly valve) is assembled with small electric actuator and plastic butterfly valve. The voltage is generally available: AC220V / AC380V / DC 24V three options. Input signal: (4 ~ 20mA DC or 1 ~ 5VDC) can be operated. Electric plastic butterfly valve (PVC electric butterfly valve) is light in weight and strong in corrosion resistance. It is used in many fields, such as general pure water and raw water piping systems, drainage and sewage piping systems, brine and seawater piping systems, and acid. In many industries such as alkali and chemical solution systems, the quality is recognized by the majority of users. Characteristics The main features of electric plastic butterfly valve (PVC electric butterfly valve) are as follows: 1. The exterior structure is compact and beautiful. 2. The body is light and easy to install. 3, strong corrosion resistance, a wide range of applications. 4, the material is hygienic and non-toxic. 5, wear-resistant, easy to disassemble, easy to maintain. The main technical parameters: Valve body Body form: straight-through valve body Nominal diameter: DN50~500mm Nominal pressure: PN1.0, 1.0MPa Connection form: flange type \ clip type Sealing material: FPM, EPDM, NBR Applicable temperature: 0 ~ +60 ° C Body material: UPVC, CPVC, FRPP, PPH, PVDF Spool material: UPVC, CPVC, PP, PTFE Applicable medium: water, oil, gas, acid, alkali, chemical and other civilian use. [1] Trim Valve plate form: butterfly (vertical plate) Flow characteristics: linear Actuator Actuator model: SZ, 381R, TQ Main technical parameters: power supply voltage: 220V/50Hz, 380V/50Hz, input signal: 4-20mA or 1-5V·DC, output signal: 4-20mA·DC Protection level: quite IP67, explosion-proof mark: ExdIIBT4, hand function: handle, hand wheel Ambient temperature: -25 to +70 ° C, ambient humidity: ≤ 95%



1. Domestic sewage treatment.
2. industrial wastewater treatment.
3. industrial irrigation treatment.

CTB	CTB005	CTB010	CTB016	CTB025	CTB050	CTB100	CTB200
Power	AC380 AC220 DC24V DC12V						
Torque	20NM	100NM	160NM	250NM	500NM	1000NM	2000NM
Opening Time	20S	30,60S					100S
Motor Watt	15W	23W	23W	50W	90W	100W	100W
Protection	Overheat protection (automatic restorer)						
Input Signal	4-20mA 1-5V.DC Other options available before delivery						
Output Signal	4-20mA 1-5V.DC Other options available before delivery.						
Turning Angel	0-360°	0-90°					
Environmental temperature	-25°~ 60°						
Pressure-withstanding value	1500VAC/Min						
Weight	2.5KG	3.7KG	3.7KG	6.8KG	8.0KG	12KG	12KG
Mounting Angle	Any Angle						
Waterproof	IP65						
Cabinet Material	Aluminium alloy die-castings						
Manual Operation	With Handle						
Limit Switch	Electric operation,full open closed limit switch,Manual operation,mechanical block						

6 inch motorized butterfly valve

1 Imported accessories

3 Actuator environmental paint layer

2 Strong sealing

4 30% compensation wear design

## PARAMETER

Product Name	UPVC Electric butterfly valve
Working medium	Sewage, weak acid base, water, sea water, salt water, etc.
Medium temperature	-20~80℃
Working pressure	10KG (PN1.0Mpa)
The valve body material	UPVC Valve body
Sealing material	EPDM(Epdm rubber)

# Product display



## MORE DETAILS

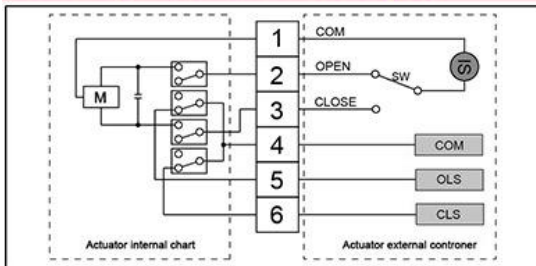
Connection type	Wafer
Valve core materials	UPVC
Size range	DN50~DN200
Voltage	AC220V DC24V (Default passive type)



# Wiring Diagram

Professional manufacturer  
of electric valves

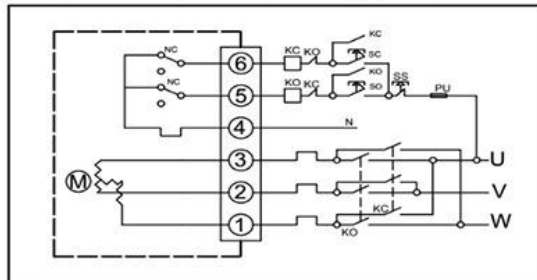
## ■CR11 ( AC passive contact type )



Voltage : AC220V

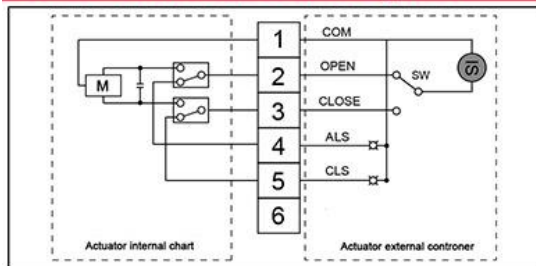
- 1.Connecting SW and OPEN, the valve opens, getting the position,power off automatically, black and green wires output the open signal, the valve remains fully open position.
- 2.Connecting SW and CLOSE, the valve closes, getting the position, power off automatically,black and red wires output the close signal, the valve remains fully close position

## ■AC380v ( standard wiring diagram )



- 1.KO close, valve open,getting the position,internal automatically power off
- 2.KC close, valve close,getting the position,internal automatically power off

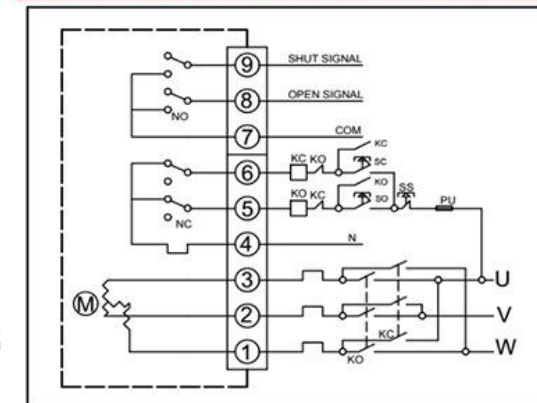
## ■CR12 ( AC active contact type )



Voltage : AC220V

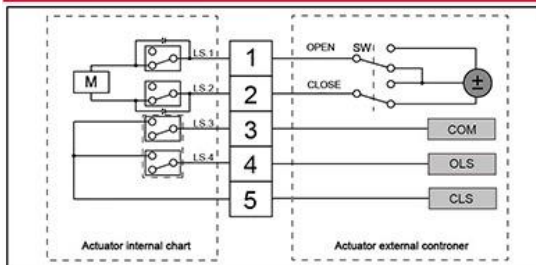
- 1.Connecting SW and OPEN, the valve opens, getting the position,power off automatically, yellow and green wires output the open signal, the valve remains fully open position.
- 2.Connecting SW and CLOSE, the valve closes, getting the position, power off automatically,yellow and red wires output the close signal, the valve remains fully close position

## ■AC380v ( passive contact type wiring diagram )



- 1.KO close, valve open,getting the position,internal automatically power off,terminal 8 output open position signal
- 2.KC close, valve close,getting the position,internal automatically power off,terminal 9 output close position signal

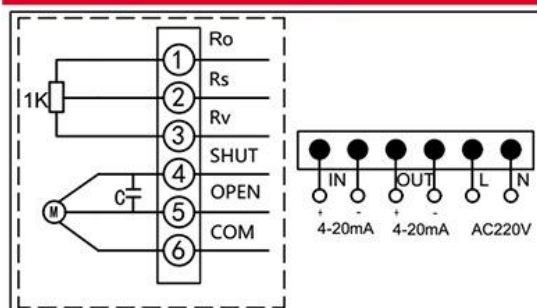
## ■CR13 ( DC passtive contact type )



Voltage : DC12/24V

- 1.Connecting SW and OPEN, the valve opens, getting the position,power off automatically, yellow and green wires output the open signal, the valve remains fully open position.
- 2.Connecting SW and CLOSE, the valve closes, getting the position, power off automatically,yellow and red wires output the close signal, the valve remains fully close position

## ■Intelligent modulating type



- 1.Power(L&N)
- 2.Input signal,output signal